



Some plant and animal illustrations to help answer questions D3, D5 and Extra Nature page 6

More posters on coastwatch.org Shellfish, Jellyfish, Seaweeds and IAS



Green seaweed

Mainly Ulvas. Tissue tube or thread-like. Attached by holdfast No roots. **H - L**



Crabs

Many species. Hide in cool moist areas. **H - Su**



Lug worm (*Arenicola*) cast

Worms live in sand & mudflat. Nursery at highest shore levels. **H - L**



Native Oyster

On and half buried in sand or mud. **L - Su**



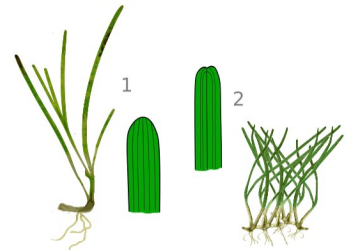
Glasswort (*Salicornia*)

Green waxy or red-orange in Autumn. **S - H**



Cordgrass (*Spartina*)

Forms dense upright clumps or fields. **S - H**



Seagrass (*Zostera*)

Soft grass with roots. *Z. marina* (1) long blades. **L-Su** *Z. noltii* (2) fine lying on mudflats like thin wet lawn. **M**



Brown & red seaweeds

Many species and many forms on rocks and other seaweeds.



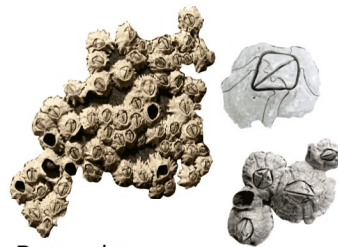
Jellyfish

Many species. Tentacles with stinging cells.



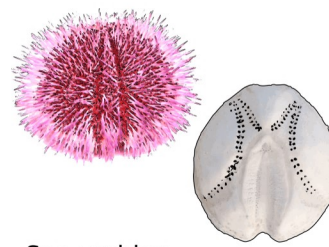
Sea Anemones

Common beadlet anemone in and out of water. **M - L**



Barnacles

Crustaceans where adults are permanently attached. **S - H**



Sea urchins

Common sea urchin (L). **L - Su**
Sea potato (R). **L - Su**



Starfish

Common starfish (L). **Su**
Brittle star (R). **Su**



Honeycomb reef (*Sabellaria*)

Worms build sand reefs, usually stuck to boulders/rocks. **L - Su**



Sand Mason (*Lanice*)

Buried worm, with top of shell/sand tube fringe visible. **M - Su**



Mussels (*Mytilus*)

Hold onto rock or seafloor by threads. **M - Su**



Razor Shell

3 species (one is our longest shell). **L - Su**



Cockles

Several species. In sand & mud. **M - Su**



Limpets

Chinese hats on rocks. Several species. **H - L**



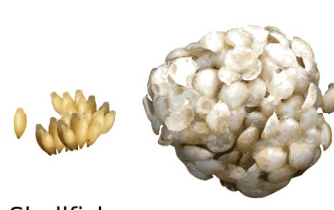
Slipper limpet (*Crepidula*)

Found on stones, on top of each other and other shellfish. **M - Su**



Dog whelk

Has an opening with siphon canal (not rounded like winkles). **M - L**



Shellfish eggs

Dog whelk 'skittles' (R). **M - L**
Common Whelk Egg ball (L). **Su**



Fish egg cases

Dogfish (L) often in clumps. Skate/ray (R) individual cases.

 Invasive Alien Species

SHORE LEVEL AT WHICH THESE USUALLY LIVE

S Splash Zone **M** Mid Shore **Su** Sublittoral
H High Shore **L** Low Shore

Other ID posters available at www.coastwatch.org

Shellfish ID Poster

Jellyfish ID Poster

Invasives ID Poster

Seaweed ID Poster